



SUPERB CITY WRENS

Help us find our Fairy-wrens! Do a 15-minute wren-watch in Moonee Valley

We're inviting people in Moonee Valley to be part of an urban bird bioblitz from the **24th – 30th November**. Superb Fairy-wrens (sometimes called "blue wrens") and other small birds are declining in cities. The Moonee Valley City Council, along with other local councils and community groups across Melbourne are working to bring them back into our parks and gardens.

You can help! By doing "wren-watches" during the bioblitz week you can help us find out where these little birds are hiding across the city and understand more about what type of landscape they need to thrive.

How to Wren-watch

1. Download the iNaturalist app to your phone and make an account. Search for the "Superb City Wrens" project and click "join".
2. Pick a location! This can be anywhere – your backyard, a park, even a local street OR you can choose one of the priority locations in your area below (check the map too).
3. Once you are at your wren-watch location, start a 15-minute timer and look for any small birds!
4. When you see a bird, open iNaturalist and record the sighting using the "+" button. If you get a photo, that's great, but you can also add a sighting with "no media".
5. Put the bird species ID in the "What did you see?" box, and don't forget to add it to "Superb City Wrens" in the project box.
6. Stop after 15 minutes. If you saw no birds at all, please record this as an "absence" in the "What did you see" box as it's important information too!

Places to look (check on the map too):

- Along Steele Creek
- Along Moonee Ponds Creek
- Along the Maribyrnong River



Male Superb Fairy-wren



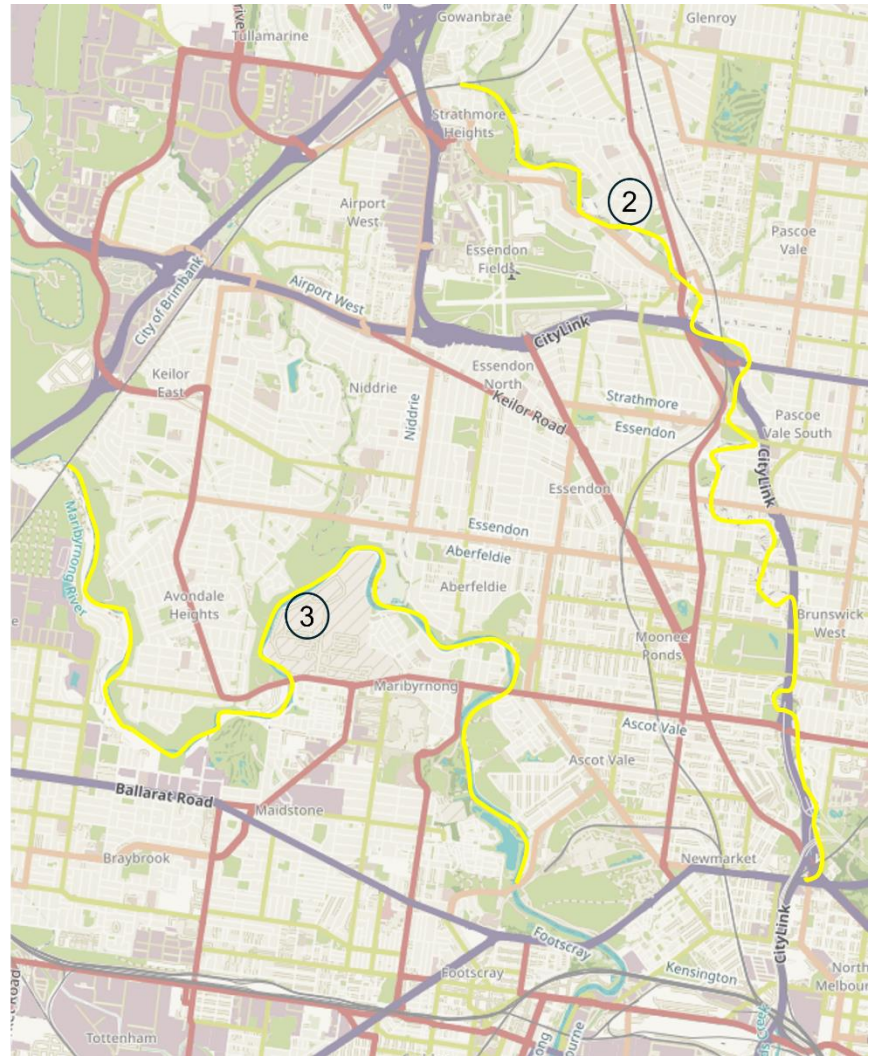
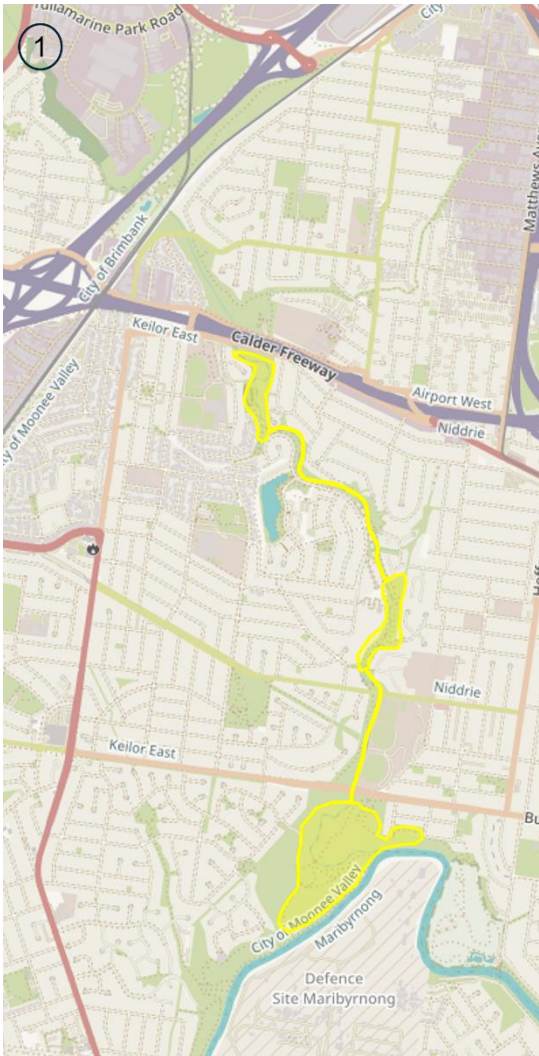
Female Superb Fairy-wren



For more information about the project, go to superbcitywrens.com

Free lunchtime webinar [link here](https://tinyurl.com/56a9h5xx) or <https://tinyurl.com/56a9h5xx>

Join us online at 12:30pm Weds 27th November to learn more!



Important places in the City of Moonee Valley to hunt for small urban birds:

1. Along Steele Creek, especially vegetation within the Avondale Heights Parkland, Rose Creek Reserve, and Spring Gully Reserve.
2. Anywhere along the Moonee Ponds Creek
3. Anywhere along the Maribyrnong River.